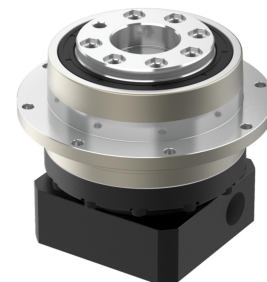


Planetary Helical Flange Gearbox



Specification	Unit	Stage	Ratio	PHF060	PHF090	PHF110	PHF140	PHF200	PHF255
Rated output torque T_{2N}		1	4	48	130	270	560	1100	1700
			5	60	160	330	650	1200	2000
			6	50	140	300	550	1100	1800
			7	50	140	300	550	1100	1800
			8	40	100	230	450	900	1500
			10	40	100	230	450	900	1500
		2	20	48	130	270	560	1100	1700
			25	60	160	330	650	1200	2000
			35	50	140	300	550	1100	1800
			40	48	130	270	560	1000	1700
			50	60	160	330	650	1200	2000
			60	50	140	300	550	1100	1800
			70	50	140	300	550	1100	1800
			80	40	100	230	450	900	1500
100	40	100	230	450	900	1500			
Emergency stop torque T_{2NOT}	Nm	1,2	4-100	Triple rated output torque					
Rated input speed $\eta 1N$	rpm	1,2	4-100	5000	4000	4000	3000	3000	2000
Maximum input speed $\eta 1B$		1,2	4-100	10000	8000	8000	6000	6000	4000
Superprecision backlash $P0$	arcmin	1	4-10	≤ 1	≤ 1	≤ 1	≤ 1	≤ 1	≤ 1
		2	20-100	≤ 3	≤ 3	≤ 3	≤ 3	≤ 3	≤ 3
Standard backlash $P2$	arcmin	1	4-10	≤ 5	≤ 5	≤ 5	≤ 5	≤ 5	≤ 5
		2	20-100	≤ 8	≤ 8	≤ 8	≤ 8	≤ 8	≤ 8
Torsional rigidity	Nm/arcmin	1,2	4-100	13	31	82	151	440	1006
Maximum bending torque $M2KB$	Nm	1,2	4-100	125	235	430	1300	3064	5900
Allowable axial force F_{2aB}	N	1,2	4-100	1050	2850	2990	10590	16660	29430
Lifespan	hr	1,2	4-100	20000					
Efficiency	%	1	4-10	$\geq 97\%$					
		2	20-100	$\geq 94\%$					
Weight	kg	1	4-10	1.1	2.9	5.4	11.9	31.6	56.1
		2	20-100	1.7	4.2	8	15.9	36.9	70.4
Working temperature	$^{\circ}C$	1,2	4-100	$-20^{\circ}C \sim 90^{\circ}C$					
Lubricating		1,2		Synthetic lubricating grease					
IP Grade		1,2	4-100	IP65					
Installation direction		1,2	4-100	In any direction					
Noise level ($\eta 1=3000rpm, off load$)	dB(A)	1.2	4-100	≤ 58	≤ 60	≤ 63	≤ 65	≤ 67	≤ 70